

# 605

## ROD SEAL

*Twin Lip  
Polyurethane*

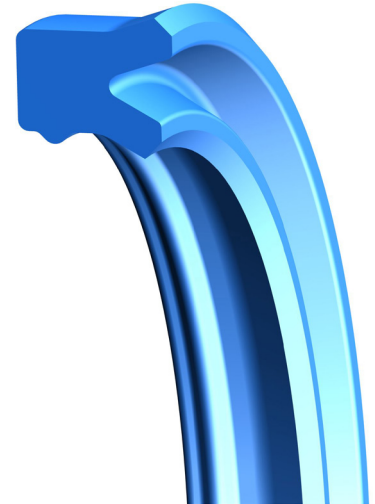
### DESIGN

The Hallite 605 twin lip, asymmetric rod seal is designed with precision trimmed sealing lips to provide a dry sealing solution in light and medium-duty applications. The seal can be considered for use in heavy-duty applications when used with a suitable full depth back-up ring. The sealing lips are precision trimmed at an angle to give optimal rod sealing performance.

The range covers most standard housings used in Europe, North America and Asia.

The Hallite 605 is designed to have interference in the seal housing groove and has a secondary lip. The secondary sealing lip located behind the primary sealing lip improves stability of the seal in the gland. The inner dynamic lip is shorter and more robust to improving sealing and compression set characteristics over conventional, symmetrical U-rings.

The Hallite 605 is molded in Hythane® 181, Hallite's high-performance polyurethane, for easy installation and excellent low temperature performance.



### FEATURES

- General purpose rod seal
- Robust design
- Excellent wear resistance
- Increase seal stability
- Performs well over wide temperature range and is extremely effective in low temperatures
- Primary lip protection
- Easy to install

### MATERIALS

As standard, this product comes in the following material. Contact your local Hallite technical team if you would like to find out if this profile can be made in a custom material to suit your application. For further material details, please refer to the Hallite Material Table.

MATERIAL OPTIONS	Name	Type	Color
Standard	Hythane® 181	TPU-EU	Blue

## TECHNICAL DETAILS

OPERATING CONDITIONS	METRIC	INCH
Maximum Speed	1.0 m/sec	3.0 ft/sec
Temperature Range	-45°C +110°C	-50°F +230°F
Maximum Pressure	400 bar	6000 psi
Maximum Pressure with Backup Ring	700 bar	10000 psi

### NOTE

Data given are maximum values and can apply depending on specific application. Maximum ratings of temperature, pressure, or operating speeds are dependent on fluid medium, surface, gap value, and other variables such as dynamic or static service. Maximum values are not intended for use together at the same time, e.g. max temperature and max pressure. Please contact your Hallite technical representative for application support.

### NOTE

**Pressure Rating:** Can be extended with use of back-up ring. Seek technical advice from local Hallite office.

MAXIMUM EXTRUSION GAP			
Pressure bar	160	250	400
Maximum Gap mm	0.60	0.50	0.40
Pressure psi	2400	3750	6000
Maximum Gap in	0.024	0.020	0.016

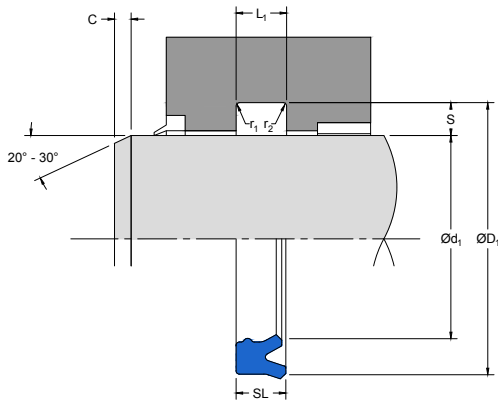
### NOTE

Figures show the maximum permissible gap all on one side, for rod seals using minimum rod  $\varnothing$  and maximum clearance  $\varnothing$  and for piston seals using the minimum clearance  $\varnothing$  and maximum bore  $\varnothing$ . Refer to Housing Design section.

SURFACE ROUGHNESS	$\mu\text{mRa}$	$\mu\text{mRz}$	$\mu\text{mRt}$	$\mu\text{inRa}$	$\mu\text{inRz}$	$\mu\text{inRt}$
Dynamic Sealing Face $\varnothing d_1$	0.1 - 0.4	1.6 max	4 max	4 - 16	63 max	157 max
Static Sealing Face $\varnothing D_1$	1.6 max	6.3 max	10 max	63 max	250 max	394 max
Static Housing Faces $L_1$	3.2 max	10 max	16 max	125 max	394 max	630 max

CHAMFERS & RADII						
Groove Section $<S$ mm	4.00	5.00	7.50	10.00	12.50	15.00
Min Chamfer C mm	3.00	3.50	5.00	6.50	7.00	8.00
Max Fillet Rad $r_1$ mm	0.20	0.40	0.80	0.80	1.20	1.60
Max Fillet Rad $r_2$ mm	0.40	0.80	1.20	1.20	1.60	2.40
Groove Section $\leq S$ in	0.125	0.187	0.250	0.312	0.375	0.500
Min Chamfer C in	0.093	0.093	0.125	0.156	0.187	0.187
Max Fillet Rad $r_1$ in	0.008	0.008	0.016	0.032	0.032	0.032
Max Fillet Rad $r_2$ in	0.016	0.016	0.032	0.047	0.047	0.047

TOLERANCES	$\varnothing d_1$	$\varnothing D_1$	$L_1$
mm	f9	Js11	+0.25 -0
in	f9	Js11	+0.010 -0



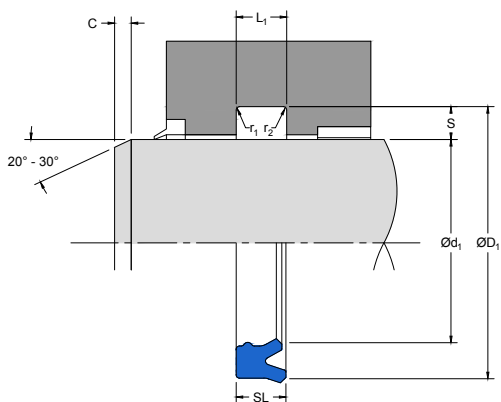
# 605

## ROD SEAL

*Twin Lip  
Polyurethane*

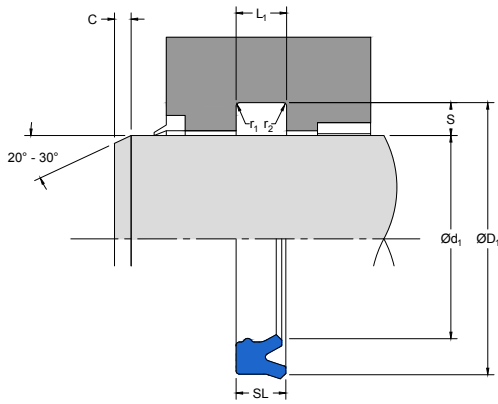
### PART NUMBER RANGE

INCH						
$\varnothing d_1$	TOL f9	$\varnothing D_1$	TOL Js11	SL	$L_1$ +0.010-0	PART No.
0.375	-0.001 -0.002	0.625	+0.002 -0.002	0.198	0.218	4544300
0.375	-0.001 -0.002	0.750	+0.003 -0.003	0.312	0.344	4710500
0.500	-0.001 -0.002	0.750	+0.003 -0.003	0.187	0.207	4576100
0.562	-0.001 -0.002	0.813	+0.003 -0.003	0.187	0.207	4576200
0.625	-0.001 -0.002	0.875	+0.003 -0.003	0.187	0.207	4493700
0.625	-0.001 -0.002	0.875	+0.003 -0.003	0.241	0.265	4329000
0.625	-0.001 -0.002	1.000	+0.003 -0.003	0.281	0.312	4447200
0.688	-0.001 -0.002	0.938	+0.003 -0.003	0.187	0.207	4572000
0.750	-0.001 -0.003	1.000	+0.003 -0.003	0.125	0.138	4552900
0.750	-0.001 -0.003	1.000	+0.003 -0.003	0.187	0.207	4571000
0.750	-0.001 -0.003	1.000	+0.003 -0.003	0.250	0.275	4345100
0.750	-0.001 -0.003	1.125	+0.003 -0.003	0.312	0.344	4512200
0.813	-0.001 -0.003	1.063	+0.003 -0.003	0.187	0.207	4576300
0.813	-0.001 -0.003	1.063	+0.003 -0.003	0.250	0.275	4558700
0.875	-0.001 -0.003	1.125	+0.003 -0.003	0.187	0.207	4576400
0.875	-0.001 -0.003	1.125	+0.003 -0.003	0.250	0.275	4442500



## PART NUMBER RANGE

INCH						
Ød <sub>1</sub>	TOL f9	ØD <sub>1</sub>	TOL Js11	SL	L <sub>1</sub> +0.010-0	PART No.
0.875	-0.001 -0.003	1.250	+0.003 -0.003	0.324	0.356	4794500
0.875	-0.001 -0.003	1.375	+0.003 -0.003	0.341	0.375	4373100
1.000	-0.001 -0.003	1.240	+0.003 -0.003	0.192	0.211	4371800
1.000	-0.001 -0.003	1.250	+0.003 -0.003	0.187	0.207	4442600
1.000	-0.001 -0.003	1.250	+0.003 -0.003	0.250	0.275	4345200
1.000	-0.001 -0.003	1.312	+0.003 -0.003	0.219	0.241	4493800
1.000	-0.001 -0.003	1.375	+0.003 -0.003	0.187	0.207	4801700
1.000	-0.001 -0.003	1.375	+0.003 -0.003	0.250	0.275	4456800
1.000	-0.001 -0.003	1.375	+0.003 -0.003	0.312	0.344	4345900
1.000	-0.001 -0.003	1.500	+0.003 -0.003	0.255	0.275	4430200
1.000	-0.001 -0.003	1.500	+0.003 -0.003	0.341	0.375	4330100
1.000	-0.001 -0.003	1.500	+0.003 -0.003	0.375	0.413	4308400
1.063	-0.001 -0.003	1.302	+0.003 -0.003	0.187	0.207	4410300
1.063	-0.001 -0.003	1.313	+0.003 -0.003	0.250	0.275	4394500
1.125	-0.001 -0.003	1.365	+0.003 -0.003	0.192	0.211	4384500
1.125	-0.001 -0.003	1.375	+0.003 -0.003	0.187	0.207	4442700



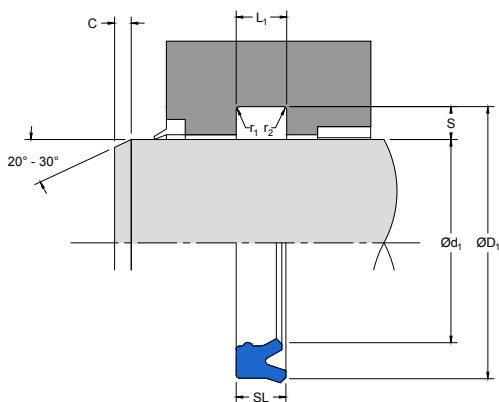
# 605

## ROD SEAL

*Twin Lip  
Polyurethane*

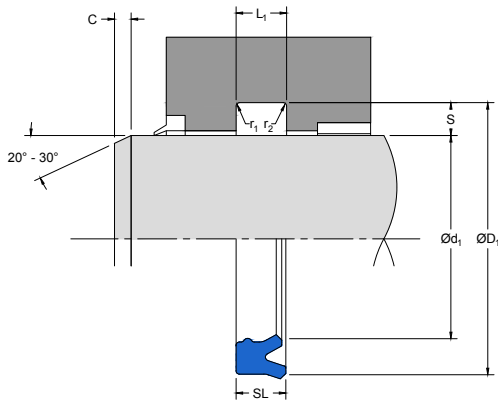
### PART NUMBER RANGE

INCH						
$\text{Ø}d_1$	TOL f9	$\text{Ø}D_1$	TOL Js11	SL	$L_1$ +0.010-0	PART No.
1.125	-0.001 -0.003	1.375	+0.003 -0.003	0.250	0.275	4388000
1.125	-0.001 -0.003	1.399	+0.003 -0.003	0.192	0.211	4371900
1.125	-0.001 -0.003	1.500	+0.003 -0.003	0.312	0.344	4392600
1.125	-0.001 -0.003	1.562	+0.003 -0.003	0.325	0.360	4568800
1.125	-0.001 -0.003	1.625	+0.003 -0.003	0.250	0.275	4370900
1.125	-0.001 -0.003	1.750	+0.003 -0.003	0.397	0.437	4373000
1.187	-0.001 -0.003	1.562	+0.003 -0.003	0.250	0.275	4458600
1.250	-0.001 -0.003	1.500	+0.003 -0.003	0.187	0.207	4359600
1.250	-0.001 -0.003	1.500	+0.003 -0.003	0.250	0.275	4345300
1.250	-0.001 -0.003	1.625	+0.003 -0.003	0.187	0.207	4552600
1.250	-0.001 -0.003	1.625	+0.003 -0.003	0.227	0.250	4330200
1.250	-0.001 -0.003	1.625	+0.003 -0.003	0.250	0.275	4460600
1.250	-0.001 -0.003	1.625	+0.003 -0.003	0.312	0.344	4346000
1.250	-0.001 -0.003	1.750	+0.003 -0.003	0.250	0.275	4513500
1.250	-0.001 -0.003	1.750	+0.003 -0.003	0.375	0.413	4335800
1.250	-0.001 -0.003	1.875	+0.003 -0.003	0.397	0.437	4330300



## PART NUMBER RANGE

INCH						
Ød <sub>1</sub>	TOL f9	ØD <sub>1</sub>	TOL Js11	SL	L <sub>1</sub> +0.010-0	PART No.
1.375	-0.001 -0.003	1.625	+0.003 -0.003	0.187	0.207	4392200
1.375	-0.001 -0.003	1.625	+0.003 -0.003	0.250	0.275	4345400
1.375	-0.001 -0.003	1.687	+0.003 -0.003	0.219	0.241	4493900
1.375	-0.001 -0.003	1.750	+0.003 -0.003	0.187	0.207	4552800
1.375	-0.001 -0.003	1.750	+0.003 -0.003	0.312	0.344	4346100
1.375	-0.001 -0.003	1.875	+0.003 -0.003	0.375	0.413	4403100
1.375	-0.001 -0.003	2.000	+0.004 -0.004	0.397	0.437	4330400
1.437	-0.001 -0.003	1.812	+0.003 -0.003	0.312	0.344	4442800
1.500	-0.001 -0.003	1.750	+0.003 -0.003	0.250	0.275	4345500
1.500	-0.001 -0.003	1.875	+0.003 -0.003	0.187	0.207	4576600
1.500	-0.001 -0.003	1.875	+0.003 -0.003	0.250	0.275	4322100
1.500	-0.001 -0.003	1.875	+0.003 -0.003	0.312	0.344	4346200
1.500	-0.001 -0.003	1.875	+0.003 -0.003	0.375	0.413	4385400
1.500	-0.001 -0.003	2.000	+0.004 -0.004	0.250	0.275	4394400
1.500	-0.001 -0.003	2.000	+0.004 -0.004	0.341	0.375	4330500
1.500	-0.001 -0.003	2.000	+0.004 -0.004	0.375	0.413	4322200



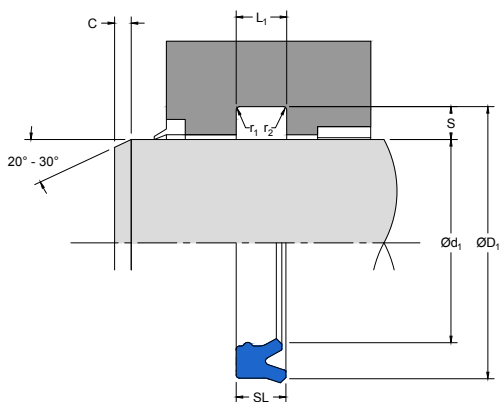
# 605

## ROD SEAL

*Twin Lip  
Polyurethane*

### PART NUMBER RANGE

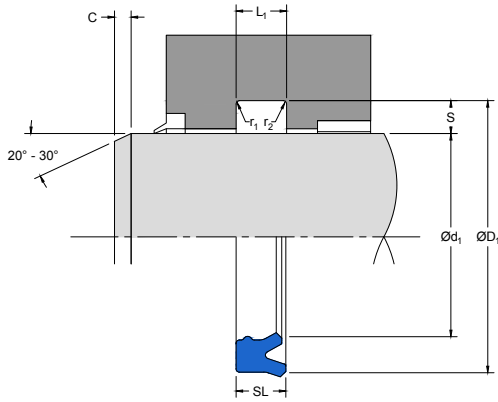
INCH						
Ød <sub>1</sub>	TOL f <sub>9</sub>	ØD <sub>1</sub>	TOL Js <sub>11</sub>	SL	L <sub>1</sub> +0.010-0	PART No.
1.500	-0.001 -0.003	2.125	+0.004 -0.004	0.375	0.413	4442900
1.500	-0.001 -0.003	2.125	+0.004 -0.004	0.397	0.437	4330600
1.625	-0.001 -0.003	1.875	+0.003 -0.003	0.250	0.275	4345600
1.625	-0.001 -0.003	2.000	+0.004 -0.004	0.281	0.312	4542800
1.625	-0.001 -0.003	2.000	+0.004 -0.004	0.312	0.344	4443000
1.625	-0.001 -0.003	2.000	+0.004 -0.004	0.375	0.413	4443100
1.625	-0.001 -0.003	2.125	+0.004 -0.004	0.375	0.413	4512100
1.750	-0.001 -0.003	2.000	+0.004 -0.004	0.250	0.275	4345700
1.750	-0.001 -0.003	2.125	+0.004 -0.004	0.250	0.275	4357200
1.750	-0.001 -0.003	2.125	+0.004 -0.004	0.312	0.344	4346300
1.750	-0.001 -0.003	2.125	+0.004 -0.004	0.375	0.413	4366800
1.750	-0.001 -0.003	2.250	+0.004 -0.004	0.250	0.275	4552700
1.750	-0.001 -0.003	2.250	+0.004 -0.004	0.341	0.375	4330700
1.750	-0.001 -0.003	2.250	+0.004 -0.004	0.375	0.413	4337000
1.750	-0.001 -0.003	2.250	+0.004 -0.004	0.500	0.550	4376800
1.750	-0.001 -0.003	2.375	+0.004 -0.004	0.437	0.481	4443200



## PART NUMBER RANGE

INCH						
Ød <sub>1</sub>	TOL f9	ØD <sub>1</sub>	TOL Js11	SL	L <sub>1</sub> +0.010-0	PART No.
1.875	-0.001 -0.003	2.250	+0.004 -0.004	0.312	0.344	4834600
1.875	-0.001 -0.003	2.250	+0.004 -0.004	0.375	0.413	4476200
1.875	-0.001 -0.003	2.375	+0.004 -0.004	0.375	0.413	4391200
1.875	-0.001 -0.003	2.500	+0.004 -0.004	0.397	0.437	4331500
2.000	-0.001 -0.004	2.250	+0.004 -0.004	0.250	0.275	4345800
2.000	-0.001 -0.004	2.375	+0.004 -0.004	0.250	0.275	4458700
2.000	-0.001 -0.004	2.375	+0.004 -0.004	0.312	0.344	4346400
2.000	-0.001 -0.004	2.375	+0.004 -0.004	0.375	0.413	4380100
2.000	-0.001 -0.004	2.500	+0.004 -0.004	0.250	0.275	4496900
2.000	-0.001 -0.004	2.500	+0.004 -0.004	0.312	0.344	4382900
2.000	-0.001 -0.004	2.500	+0.004 -0.004	0.341	0.375	4330900
2.000	-0.001 -0.004	2.500	+0.004 -0.004	0.375	0.413	4337100
2.000	-0.001 -0.004	2.500	+0.004 -0.004	0.781	0.859	4491400
2.000	-0.001 -0.004	2.625	+0.004 -0.004	0.312	0.344	4333100
2.000	-0.001 -0.004	2.625	+0.004 -0.004	0.397	0.437	4331000
2.000	-0.001 -0.004	2.625	+0.004 -0.004	0.500	0.550	4346500





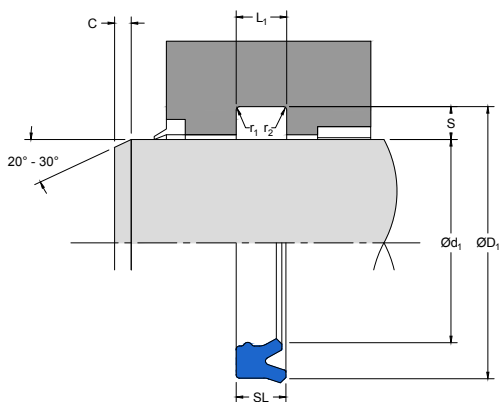
# 605

## ROD SEAL

*Twin Lip  
Polyurethane*

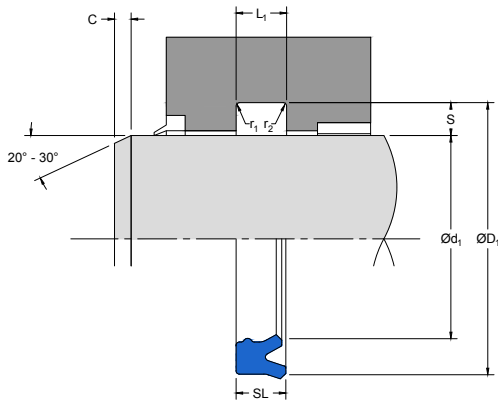
### PART NUMBER RANGE

INCH						
Ød <sub>1</sub>	TOL f <sub>9</sub>	ØD <sub>1</sub>	TOL Js <sub>11</sub>	SL	L <sub>1</sub> +0.010-0	PART No.
2.000	-0.001 -0.004	2.750	+0.004 -0.004	0.625	0.688	4347300
2.125	-0.001 -0.004	2.500	+0.004 -0.004	0.375	0.413	4443300
2.250	-0.001 -0.004	2.625	+0.004 -0.004	0.335	0.375	4372200
2.250	-0.001 -0.004	2.750	+0.004 -0.004	0.341	0.375	4331100
2.250	-0.001 -0.004	2.750	+0.004 -0.004	0.375	0.413	4337200
2.250	-0.001 -0.004	2.875	+0.004 -0.004	0.500	0.550	4750200
2.250	-0.001 -0.004	3.000	+0.004 -0.004	0.511	0.562	4331200
2.375	-0.001 -0.004	2.750	+0.004 -0.004	0.375	0.413	4443400
2.375	-0.001 -0.004	2.875	+0.004 -0.004	0.375	0.413	4443500
2.500	-0.001 -0.004	2.875	+0.004 -0.004	0.312	0.344	4443600
2.500	-0.001 -0.004	2.875	+0.004 -0.004	0.375	0.413	4458500
2.500	-0.001 -0.004	2.937	+0.004 -0.004	0.284	0.312	4535900
2.500	-0.001 -0.004	3.000	+0.004 -0.004	0.250	0.275	4553000
2.500	-0.001 -0.004	3.000	+0.004 -0.004	0.284	0.312	4331300
2.500	-0.001 -0.004	3.000	+0.004 -0.004	0.375	0.413	4335900
2.500	-0.001 -0.004	3.125	+0.004 -0.004	0.500	0.550	4346600



## PART NUMBER RANGE

INCH						
Ød <sub>1</sub>	TOL f9	ØD <sub>1</sub>	TOL Js11	SL	L <sub>1</sub> +0.010-0	PART No.
2.500	-0.001 -0.004	3.250	+0.004 -0.004	0.625	0.688	4347400
2.625	-0.001 -0.004	3.000	+0.004 -0.004	0.375	0.413	4443700
2.625	-0.001 -0.004	3.125	+0.004 -0.004	0.500	0.550	4514900
2.625	-0.001 -0.004	3.250	+0.004 -0.004	0.625	0.688	4376900
2.735	-0.001 -0.004	3.250	+0.004 -0.004	0.312	0.344	4746400
2.750	-0.001 -0.004	3.125	+0.004 -0.004	0.375	0.413	4379100
2.750	-0.001 -0.004	3.250	+0.004 -0.004	0.375	0.413	4336000
2.750	-0.001 -0.004	3.375	+0.004 -0.004	0.375	0.413	4456900
2.750	-0.001 -0.004	3.375	+0.004 -0.004	0.500	0.550	4346700
2.750	-0.001 -0.004	3.375	+0.004 -0.004	0.805	0.885	4467400
2.750	-0.001 -0.004	3.500	+0.004 -0.004	0.625	0.688	4347500
2.875	-0.001 -0.004	3.250	+0.004 -0.004	0.375	0.413	4443800
2.875	-0.001 -0.004	3.375	+0.004 -0.004	0.375	0.413	4760200
3.000	-0.001 -0.004	3.375	+0.004 -0.004	0.375	0.413	4468300
3.000	-0.001 -0.004	3.438	+0.004 -0.004	0.281	0.310	4539900
3.000	-0.001 -0.004	3.500	+0.004 -0.004	0.375	0.413	4336100



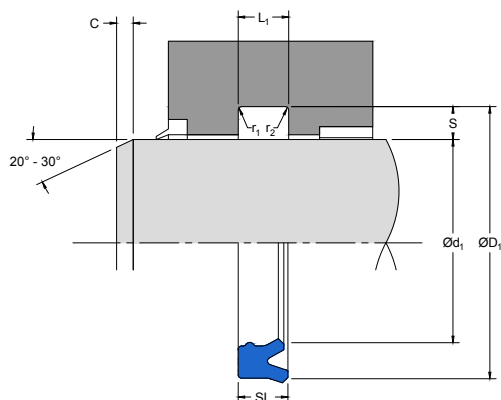
# 605

## ROD SEAL

*Twin Lip  
Polyurethane*

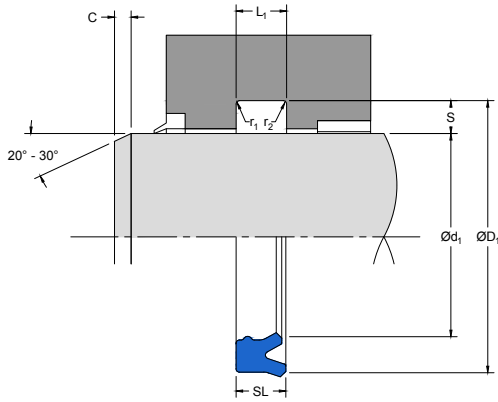
### PART NUMBER RANGE

INCH						
Ød <sub>1</sub>	TOL f <sub>9</sub>	ØD <sub>1</sub>	TOL Js <sub>11</sub>	SL	L <sub>1</sub> +0.010-0	PART No.
3.000	-0.001 -0.004	3.500	+0.004 -0.004	0.625	0.688	4399600
3.000	-0.001 -0.004	3.500	+0.004 -0.004	0.781	0.859	4476900
3.000	-0.001 -0.004	3.625	+0.004 -0.004	0.500	0.550	4346800
3.000	-0.001 -0.004	3.750	+0.004 -0.004	0.625	0.688	4347600
3.125	-0.001 -0.004	3.500	+0.004 -0.004	0.625	0.688	4399700
3.250	-0.001 -0.005	3.625	+0.004 -0.004	0.375	0.413	4714100
3.250	-0.001 -0.005	3.625	+0.004 -0.004	0.562	0.619	4476800
3.250	-0.001 -0.005	3.750	+0.004 -0.004	0.375	0.413	4336200
3.250	-0.001 -0.005	3.875	+0.004 -0.004	0.500	0.550	4415400
3.375	-0.001 -0.005	3.875	+0.004 -0.004	0.375	0.413	4760300
3.375	-0.001 -0.005	4.000	+0.004 -0.004	0.594	0.653	4377000
3.500	-0.001 -0.005	3.875	+0.004 -0.004	0.375	0.413	4468400
3.500	-0.001 -0.005	4.000	+0.004 -0.004	0.312	0.344	4540000
3.500	-0.001 -0.005	4.000	+0.004 -0.004	0.375	0.413	4336300
3.500	-0.001 -0.005	4.125	+0.004 -0.004	0.500	0.550	4346900
3.500	-0.001 -0.005	4.250	+0.004 -0.004	0.625	0.688	4347700



## PART NUMBER RANGE

INCH						
Ød <sub>1</sub>	TOL f9	ØD <sub>1</sub>	TOL Js11	SL	L <sub>1</sub> +0.010-0	PART No.
3.625	-0.001 -0.005	4.125	+0.004 -0.004	0.375	0.413	4436200
3.750	-0.001 -0.005	4.125	+0.004 -0.004	0.375	0.413	4702500
3.750	-0.001 -0.005	4.250	+0.004 -0.004	0.375	0.413	4443900
3.750	-0.001 -0.005	4.250	+0.004 -0.004	0.500	0.550	4456500
3.750	-0.001 -0.005	4.250	+0.004 -0.004	0.562	0.625	4436100
3.875	-0.001 -0.005	4.375	+0.004 -0.004	0.375	0.413	4760400
4.000	-0.001 -0.005	4.375	+0.004 -0.004	0.375	0.413	4468500
4.000	-0.001 -0.005	4.500	+0.004 -0.004	0.312	0.344	4586700
4.000	-0.001 -0.005	4.500	+0.004 -0.004	0.375	0.413	4336400
4.000	-0.001 -0.005	4.500	+0.004 -0.004	0.562	0.619	4385700
4.000	-0.001 -0.005	4.500	+0.004 -0.004	0.781	0.859	4399800
4.000	-0.001 -0.005	4.625	+0.004 -0.004	0.375	0.413	4520100
4.000	-0.001 -0.005	4.625	+0.004 -0.004	0.500	0.550	4347000
4.000	-0.001 -0.005	4.750	+0.005 -0.005	0.500	0.550	4444000
4.000	-0.001 -0.005	4.750	+0.005 -0.005	0.625	0.688	4347800
4.250	-0.001 -0.005	5.000	+0.005 -0.005	0.625	0.688	4347900



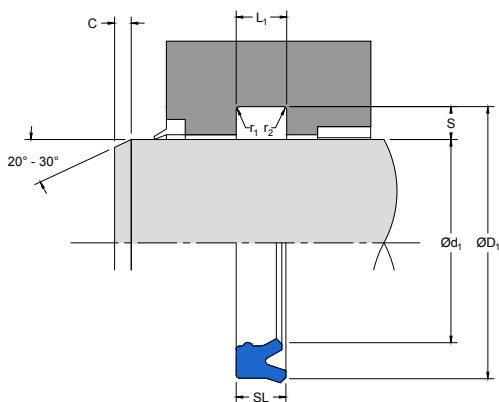
# 605

## ROD SEAL

*Twin Lip  
Polyurethane*

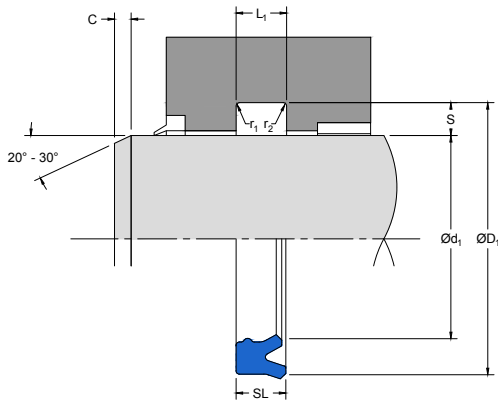
### PART NUMBER RANGE

INCH						
Ød <sub>1</sub>	TOL f <sub>9</sub>	ØD <sub>1</sub>	TOL Js <sub>11</sub>	SL	L <sub>1</sub> +0.010-0	PART No.
4.375	-0.001 -0.005	4.875	+0.005 -0.005	0.375	0.413	4760500
4.500	-0.001 -0.005	5.000	+0.005 -0.005	0.375	0.413	4379200
4.500	-0.001 -0.005	5.125	+0.005 -0.005	0.500	0.550	4347100
4.500	-0.001 -0.005	5.125	+0.005 -0.005	0.625	0.688	4444100
4.500	-0.001 -0.005	5.250	+0.005 -0.005	0.625	0.688	4348000
4.625	-0.001 -0.005	5.250	+0.005 -0.005	0.625	0.688	4377100
4.750	-0.002 -0.006	5.125	+0.005 -0.005	0.375	0.413	4714200
4.750	-0.002 -0.006	5.250	+0.005 -0.005	0.625	0.688	4451100
4.875	-0.002 -0.006	5.375	+0.005 -0.005	0.375	0.413	4760600
5.000	-0.002 -0.006	5.500	+0.005 -0.005	0.375	0.413	4495000
5.000	-0.002 -0.006	5.500	+0.005 -0.005	0.562	0.619	4386100
5.000	-0.002 -0.006	5.500	+0.005 -0.005	0.781	0.859	4399900
5.000	-0.002 -0.006	5.531	+0.005 -0.005	0.557	0.619	4391400
5.000	-0.002 -0.006	5.625	+0.005 -0.005	0.500	0.550	4347200
5.000	-0.002 -0.006	5.750	+0.005 -0.005	0.625	0.688	4348100
5.125	-0.002 -0.006	5.625	+0.005 -0.005	0.562	0.619	4436000



## PART NUMBER RANGE

INCH						
Ød <sub>1</sub>	TOL f9	ØD <sub>1</sub>	TOL Js11	SL	L <sub>1</sub> +0.010-0	PART No.
5.125	-0.002 -0.006	6.000	+0.005 -0.005	0.500	0.550	4444200
5.375	-0.002 -0.006	5.875	+0.005 -0.005	0.625	0.688	4475800
5.375	-0.002 -0.006	6.000	+0.005 -0.005	0.625	0.688	4448300
5.500	-0.002 -0.006	6.000	+0.005 -0.005	0.375	0.413	4379300
5.500	-0.002 -0.006	6.000	+0.005 -0.005	0.562	0.619	4468600
5.500	-0.002 -0.006	6.125	+0.005 -0.005	0.312	0.344	4540100
5.500	-0.002 -0.006	6.250	+0.005 -0.005	0.625	0.688	4348200
5.625	-0.002 -0.006	6.125	+0.005 -0.005	0.375	0.413	4714300
6.000	-0.002 -0.006	6.500	+0.005 -0.005	0.562	0.619	4436500
6.000	-0.002 -0.006	6.500	+0.005 -0.005	0.781	0.859	4400000
6.000	-0.002 -0.006	6.531	+0.005 -0.005	0.562	0.619	4391000
6.000	-0.002 -0.006	6.750	+0.005 -0.005	0.625	0.688	4348300
6.500	-0.002 -0.006	7.250	+0.006 -0.006	0.625	0.688	4348400
7.000	-0.002 -0.006	7.500	+0.006 -0.006	0.562	0.619	4436600
7.000	-0.002 -0.006	7.500	+0.006 -0.006	0.780	0.859	4456600
7.000	-0.002 -0.006	7.531	+0.006 -0.006	0.562	0.619	4391100



# 605

## ROD SEAL

*Twin Lip  
Polyurethane*

### PART NUMBER RANGE

INCH						
$\varnothing d_1$	TOL f9	$\varnothing D_1$	TOL Js11	SL	$L_1$ +0.010-0	PART No.
7.000	-0.002 -0.006	7.750	+0.006 -0.006	0.625	0.688	4348500
7.500	-0.002 -0.006	8.000	+0.006 -0.006	0.375	0.413	4714400
7.750	-0.002 -0.006	8.500	+0.006 -0.006	0.625	0.688	4353900
8.000	-0.002 -0.006	8.500	+0.006 -0.006	0.375	0.413	4733400
8.000	-0.002 -0.006	8.500	+0.006 -0.006	0.562	0.619	4468700
8.000	-0.002 -0.006	8.750	+0.006 -0.006	0.625	0.688	4510500
8.125	-0.002 -0.006	8.625	+0.006 -0.006	0.781	0.859	4477000
8.500	-0.002 -0.006	9.000	+0.006 -0.006	0.375	0.413	4733500
9.000	-0.002 -0.006	9.500	+0.006 -0.006	0.562	0.619	4468800
9.250	-0.002 -0.006	10.000	+0.006 -0.006	0.625	0.688	4499300
9.375	-0.002 -0.006	9.875	+0.006 -0.006	0.781	0.859	4477100
9.750	-0.002 -0.006	10.250	+0.006 -0.006	0.375	0.413	4733600
10.000	-0.002 -0.007	10.500	+0.006 -0.006	0.562	0.619	4468900